

# UTA Board of Trustees Meeting

April 10, 2019



# Call to Order and Opening Remarks



# Pledge of Allegiance



# Safety First Minute



**Don't let April Showers bring you hospital flowers.  
Stay alert when driving in wet conditions.**



**UTA**   
SAFETY & SECURITY

**April 2019**



# Public Comment Period



# Public Comment Guidelines

- Each comment will be limited to two minutes per citizen or five minutes per group representative
- No handouts allowed



# **Approval of March 27, 2019 Board Meeting Minutes**



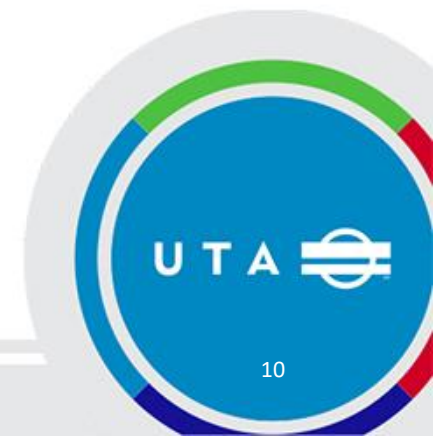


# Recommended Action (by acclamation)

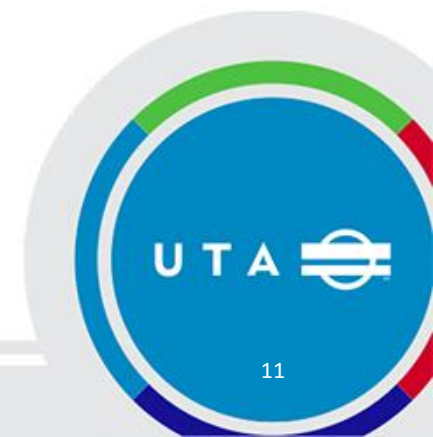
Motion to approve



# Agency Report



**R2019-04-01:  
Approving International Travel  
to the American Public  
Transportation Association's  
2019 International Rail Rodeo**





<https://www.youtube.com/watch?v=cibxtQb32qs>

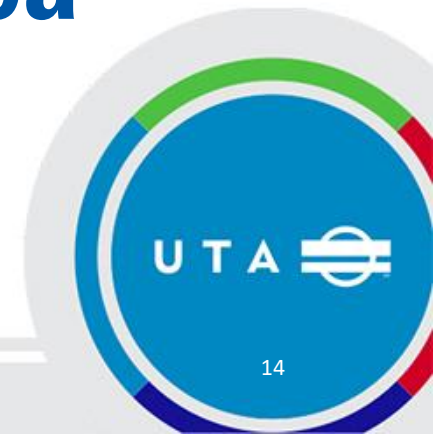
# Recommended Action (by roll call)

Motion to approve R2019-04-01:

Approving International Travel to the American Public  
Transportation Association's 2019 International Rail Rodeo



**R2019-04-02:  
Approving the Execution of an  
Interlocal Cooperation  
Agreement with Salt Lake  
County to Perform a Transit  
Alternative Analysis in the  
Point of the Mountain Area**



# Point of the Mountain Development Commission

## 2018 Point of the Mountain Vision Study identified several critical transportation improvement projects.

UDOT, MAG, WFRC, and UTA completed a transportation analysis for several projects in PoM's preferred scenario.

### REGIONAL VISION FOR THE POINT OF THE MOUNTAIN

**STATE OF UTAH  
POINT OF THE MOUNTAIN  
DEVELOPMENT COMMISSION**

**Envision  
Utah**

**JOBS**

**1 Highly-trained workforce**  
The quality of Utah's workforce is the number one factor in attracting, retaining, and growing high-paying "innovation economy" jobs. The desired workforce is diverse and highly educated, with a focus on in-demand fields. While a portion of this workforce will undoubtedly be generated by attracting workers from out of state, Utahns can fill the bulk of these jobs if they have the required skills.

**2 Improved air quality & reduced resource use**  
Employers and citizens increasingly demand a sustainable approach to natural resources like air, water, and energy. The Point of the Mountain can demonstrate sustainability by facilitating electric vehicle use, promoting non-automobile travel, reducing air emissions and energy use in buildings, using water-wise landscaping, and implementing new technologies.

**3 Connected trails, parks, and open space**  
The Point of the Mountain is already home to extensive open spaces and trails, parkland, and the Sostan Slave. Continued implementation of thoughtful and ambitious trail, park, and open space planning will establish a world-class network for people and wildlife connecting the mountain ranges and the Jordan River.

**4 Vibrant urban centers**  
Vibrant places include housing, jobs, shops, amenities, and open space. They bring destinations closer to home, shorten driving trips, increase the convenience of walking and biking, and improve affordability by diversifying housing types. The prison and other large sites at the Point of the Mountain are ideal for the creation of major urban centers, without disrupting existing single-family neighborhoods.

**5 Jobs close to where people live**  
Jobs and housing in close proximity reduce commuting distances, decrease traffic volumes during peak hours, improve air quality, lower travel times and expenditures, and enhance quality of life. While housing is needed in proximity to each side jobs in both Utah and Salt Lake counties, jobs are needed in proximity to west-side housing in both counties. Competing west-side infrastructure like the Mountain View Corridor will improve the west side attractiveness for jobs.

**6 A variety of community and housing types**  
A variety of community and housing types ensure housing affordability and a high quality of life that matches what Utahns want and can afford. Such variety includes single-family suburbs and walkable communities in neighborhood, community, and urban centers.

**ENVIRONMENT**

**7 New north-south boulevard**  
A new north-south road from Bangor Highway in Draper to 2100 North in Utah Valley will serve as an alternative to I-15, Mountain View, and Redwood Road. The new boulevard or main street will include public transportation in a dedicated right-of-way to encourage active transportation, stimulate the growth of urban centers, and provide an alternative for shorter, local trips.

**8 Connected street network**  
Street networks efficiently move people and goods. Connected streets, collectors, and local streets provide multiple alternative travel routes and enhance walking and biking. Additional crossings of the Jordan River and I-15 will be necessary.

**9 World-class public transit**  
Public transportation moves people, addresses air quality, fosters high-quality urban centers, improves affordability, and attracts "innovation economy" employers and employees. As connected, shared, and autonomous vehicles revolutionize travel, FrontRunner will increasingly serve as a backbone for long-distance trips. Light rail and/or "micro-transit" options will improve local mobility.

**10 North-south & east-west throughput**  
The Point of the Mountain bottleneck limits transportation connections between Salt Lake and Utah counties. It is essential to maximize the capacity of Mountain View, Redwood Road, I-15, FrontRunner, and light rail. High-speed east-west connections between I-15 and Mountain View are also needed to increase east-west capacity. In addition to 2100 North and Bangor Highway, a new connection closer to the county line should be explored.

**TRANSPORTATION**

**11 Catalytic center at the prison site**  
The Draper prison sits on 700 acres, hold tremendous opportunity for catalyzing growth in "high-paying jobs by (1) establishing a nationally known research and university presence, (2) attracting research employees, and (3) creating a high-quality urban center that attracts employees and employees.

**12 Research and university presence**  
Establishing a nationally-recognized research and university presence will catalyze growth in high-paying jobs by strengthening the innovation workforce, spurring research and technology transfer, and creating a "hoop" factor to brand the area and the state as a place to be.

**PRISON SITE**

**LEGEND**

Major Centers		Microtransit Circulator	
TRAX Line		North-South Boulevard	
New TRAX Line		Freeways	
FrontRunner		Major Roads	
Transit Corridor		Open Space	
Rapid Transit		Trail Connections	
Camp Williams			

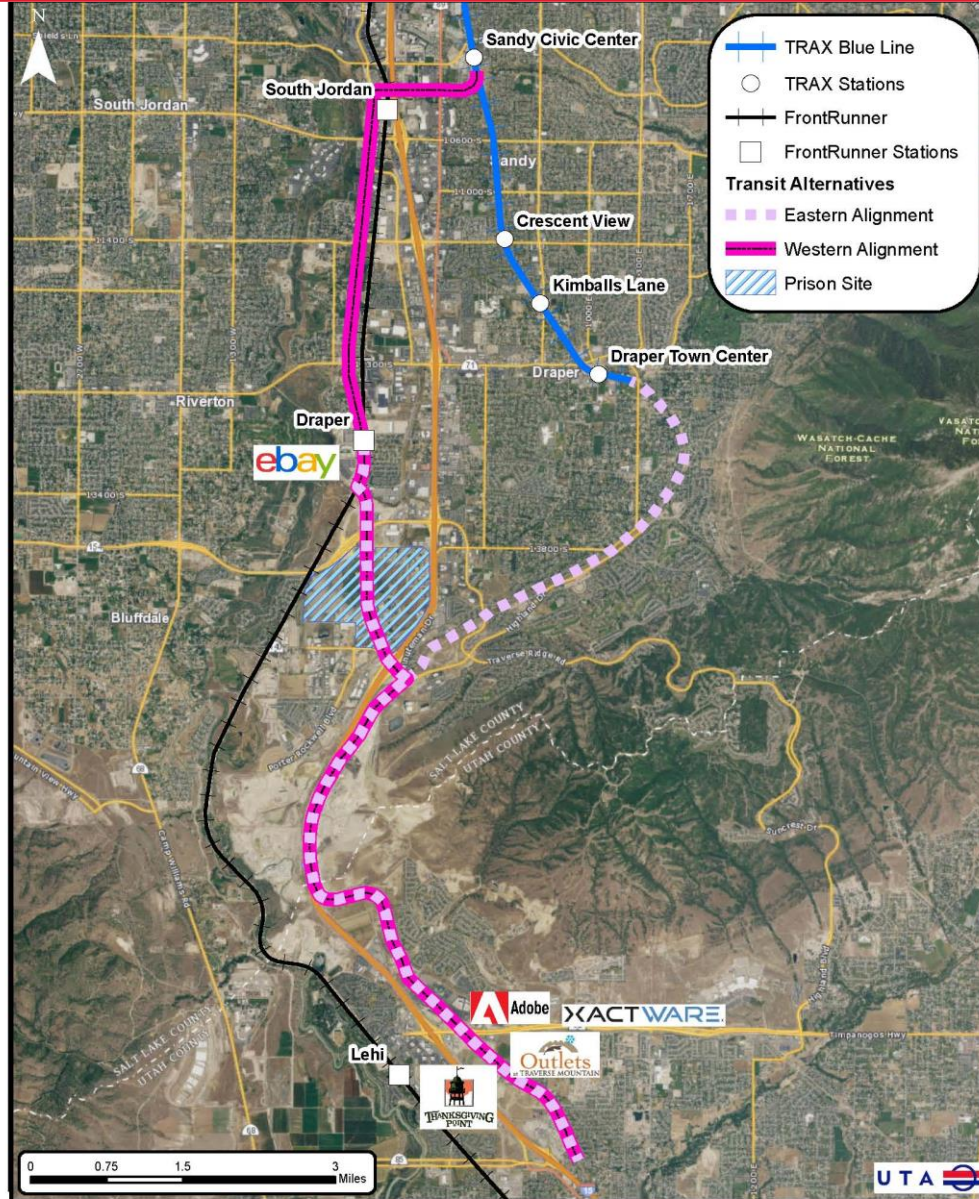
## Alternatives Analysis

As a result of the transportation analysis, UTA, UDOT, and MPOs decided to complete an alternatives analysis to study a transit connection between Sandy City, TRAX Blue Line, Frontrunner Draper Station, Utah State Prison Site, and Lehi City.





# Point of the Mountain Transit Project



# Point of the Mountain Transit Alternatives Analysis

## Alternative analysis scope of work:

- Detailed study of each alignment/mode
  - Ridership/travel markets
  - Travel time
  - Land use/economic development potential
  - Conceptual engineering
  - Capital cost refinement
- Public and stakeholder involvement
- Approx. 1 year timeframe



## Expected Outcomes:

- Locally Preferred Alternative (LPA)
  - Adopted by MPO's, local municipalities, and UTA
- More understanding of costs and risks
- Streamlines environmental/NEPA process
- Determines project eligibility for federal \$\$



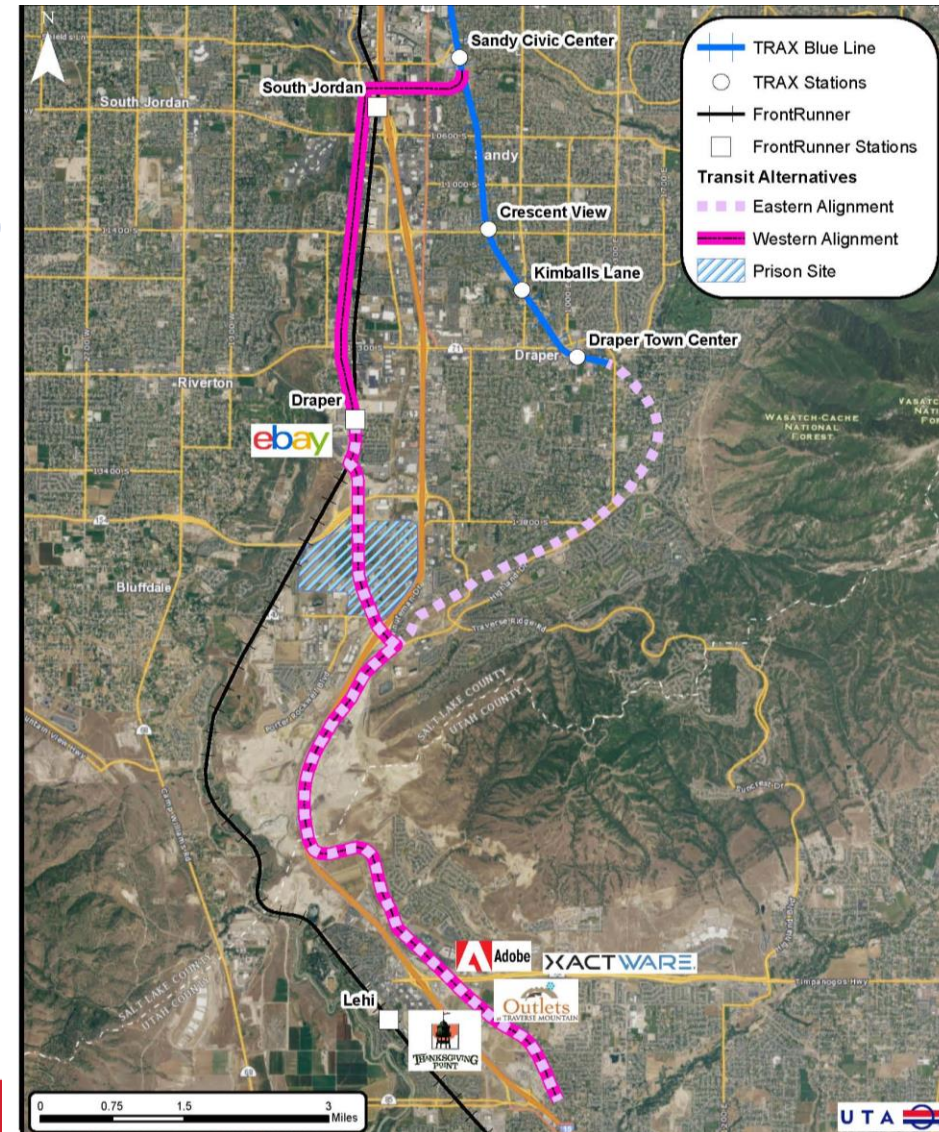
# Point of the Mountain Transit Alternatives Analysis

## Alternatives Analysis: Cost Sharing

### Funding Partners:

- Salt Lake County (\$400K)
  - Draper, Sandy, South Jordan
- UDOT (\$50K)
- UTA (\$50K)
- WFRC (\$25K)
- MAG (\$25K)

*\$250K – looking for funding partners*



- The procurement contract will be phased to account for the \$250K shortfall.
- The project includes six tasks.
  - The first four tasks can be completed with the available \$550K.
  - Completion of tasks 5 and 6 requires an additional \$250K.
- Procurement of the contract will state that work on tasks 5 and 6 will not be authorized unless the \$250K is obtained.



- Potential sources of the \$250K within the next 6 – 8 months are:
  - Silicon Slopes
  - State Legislature



# Interlocal Agreement with Salt Lake County

- Today's resolution is for approval of an Interlocal Agreement (ILA) between UTA and Salt Lake County for the transfer of \$400,000.
- A separate funding agreement is being completed between UTA, UDOT, WFRC, and MAG for \$150,000.



# Recommended Action (by roll call)

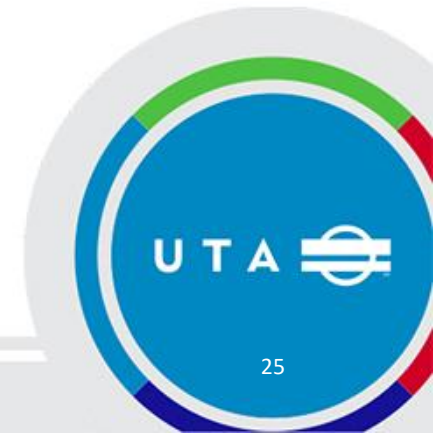
Motion to approve R2019-04-02:

Approving the Execution of an Interlocal Cooperation Agreement with Salt Lake County to Perform a Transit Alternative Analysis in the Point of the Mountain Area

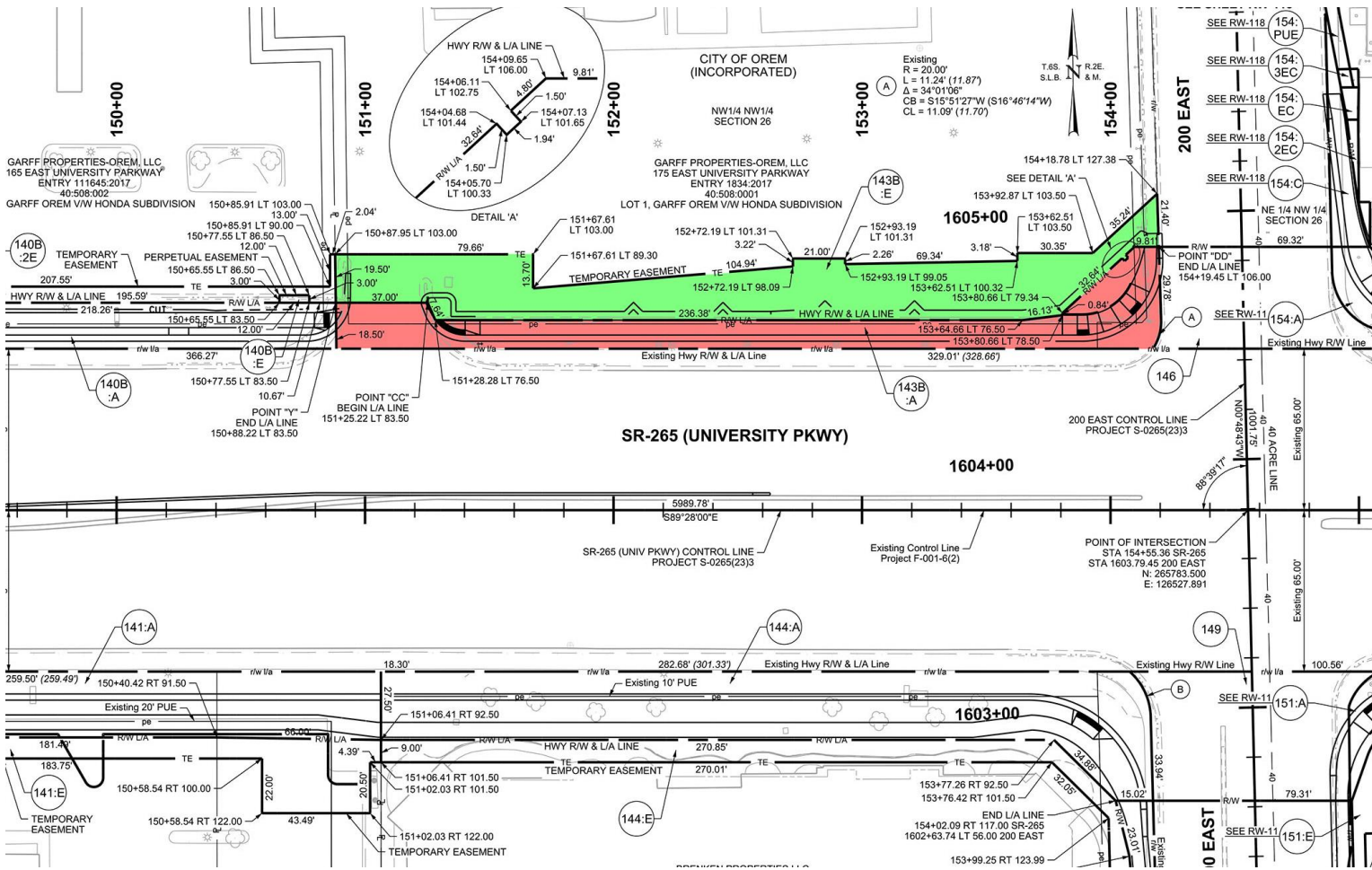




**R2019-04-03:  
Authorizing Property  
Right of Way Acquisition for  
Provo-Orem BRT**



# Parcel 143B - Context Map



- ACQUISITION
- CONSTRUCTION EASEMENT

# Right of Way Contract Terms



<b>Seller</b>	Garff Properties-Orem, LLC
<b>Purpose of Acquisition</b>	Right of Way for Provo-Orem TRIP
<b>Interest Purchased</b>	<ul style="list-style-type: none"><li>• 4,861 sf – fee acquisition</li><li>• 6,848 sf - construction easement</li></ul>
<b>Appraised Price</b>	UTA - \$181,600 Landowner - \$342,600
<b>Administrative Settlement</b>	\$110,998
<b>Purchase Price</b>	\$292,598

# Settlement



- Mediated settlement
- Property owner incurred additional costs due to construction:
  - Parking light relocation
  - Earthwork
  - Asphalt
- Avoids cost of condemnation

# Request

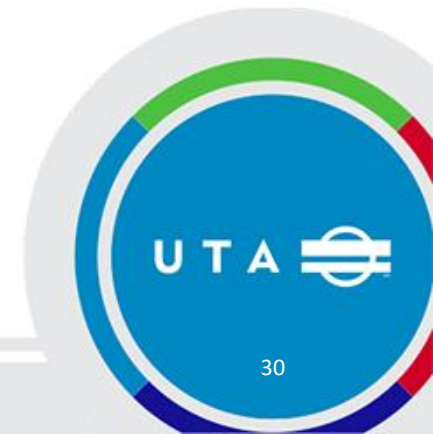


- Approve the purchase as described
- Approve the Right of Way Contract
- Authorize Executive Director to execute the transaction

# Recommended Action (by roll call)

Motion to approve R2019-04-03:

Authorizing Property Right of Way Acquisition  
for Provo-Orem BRT



# Contracts and Pre-Procurements



# Contract: Indemnification Agreement (Sandy Towers East)

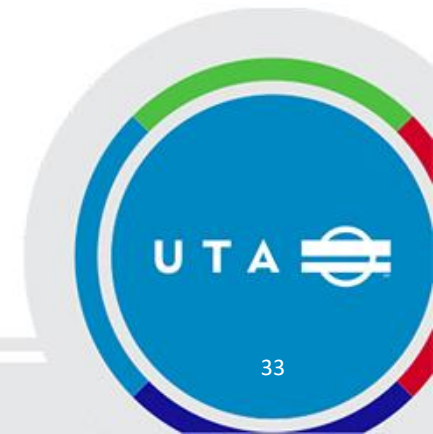
- Description and purpose:
  - Indemnification for placing a canal in an underground culvert
  - The cost is considered a “Master Development Expense” to be covered by the development partners and reimbursed per the terms of the development agreement
  - Development partners include HP Sandy Towers East, LLC and Millrock Partners, LLC
- Total general indemnity:
  - \$1,702,440





# Recommended Action (by roll call)

Motion to approve contract:  
Indemnification Agreement  
(Sandy Towers East)



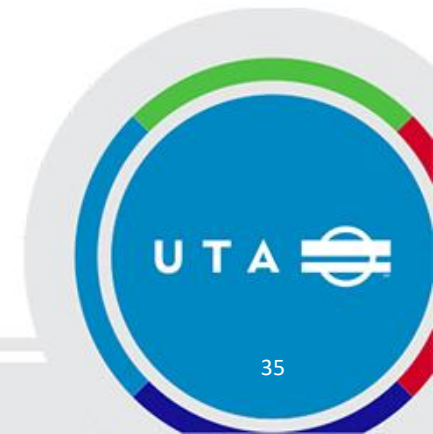
# Change Order: Legal Services (Multiple)

- Description and purpose:
  - UTA selected a panel of qualified attorneys and law firms through an RFP process to provide legal services on an on-call and as-needed basis
  - The change order extends the current contract for legal services for one year
- Total change order:
  - \$200,000
- Total contract:
  - \$855,864

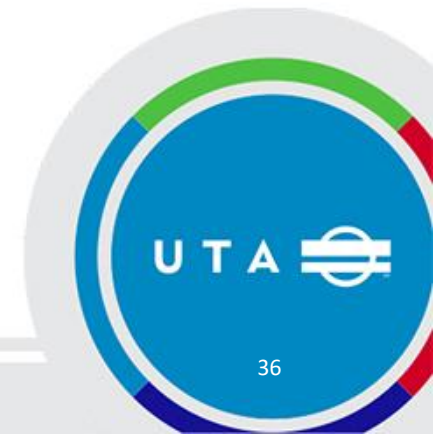


# Recommended Action (by roll call)

Motion to approve change order:  
Legal Services (Multiple)

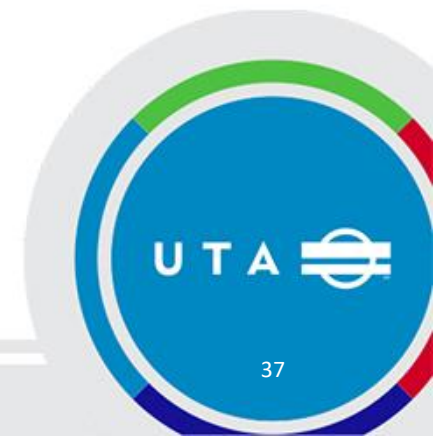


# Pre-Procurement: Point of the Mountain Alternatives Analysis



# Other Business

- a. Next meeting: April 17, 2019 at 9:00 a.m.



# Adjourn

